

E-Z INSTRUCTIONS

REUSABLE BALLOON CLUSTER KIT



E-Z LETTERING SERVICE
The Greatest Name in Auto Dealer Products

723 Ohms Way, Costa Mesa, CA 92627

Toll Free (800) 422-8442 Telephone (949) 646-8441

Fax (949) 631-4267 sales@ezlettering.com

www.ezlettering.com

Complete Kit Includes:

- 1- Ground Spike**
- 1- 35" Tall Sturdy Aluminum Pole**
- 2- Sets of Balloon Cluster Arms** (each set consists of 2 plastic parts that attach around pole, 4 screws and 4 nuts with each pair)
- 5- 30" Reusable Balloon Holders**
- 5- Reusable Balloons**
- 5- Balloon Adapter Clips**

****Reusable Balloons****

Important Information Please Read

Please note that while this product can be used any time of the year it is sensitive to air density.

In colder weather air in the Balloons will contract causing the balloon to slightly deflate. Filling the balloon all the way will help it stay inflated. Slight deflation does not mean the Balloon is defective. To test the Reusable Balloon for leaks leave in a controlled climate (such as an office).

It is recommended to remove the balloon holder from the cluster when re-inflating the balloon.

For an instruction video please go online to:
www.youtube.com/ezletteringservice

If you should have any questions or comments regarding this product please contact us.

REUSABLE BALLOON CLUSTER KIT

Part#EZ 547

STEP 1

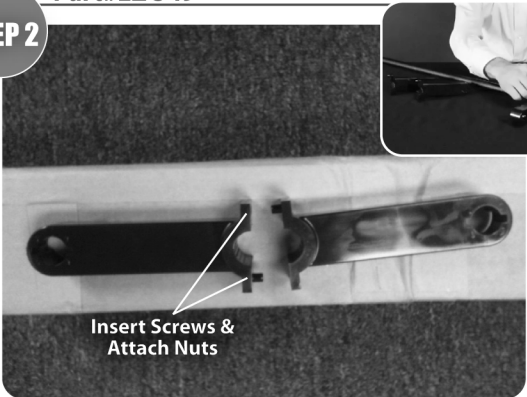


1-35" Sturdy Aluminum Pole

1. Start with 35" Aluminum Pole.

Part#EZ 549

STEP 2



2-Balloon Cluster Arm Sets

2. Take 35" Aluminum Pole & attach both sets of Arms to pole with screws & nuts provided. Attach arms flat side up. Hollow side of each arm should be facing the ground. (4 screws & 4 nuts per set)

Part#EZ 524

STEP 3



5-Reusable Balloons

3. Fill Balloons with air.

Part#EZ 526

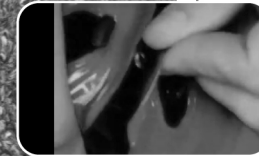
STEP 4



5-Balloon Adapter Clips

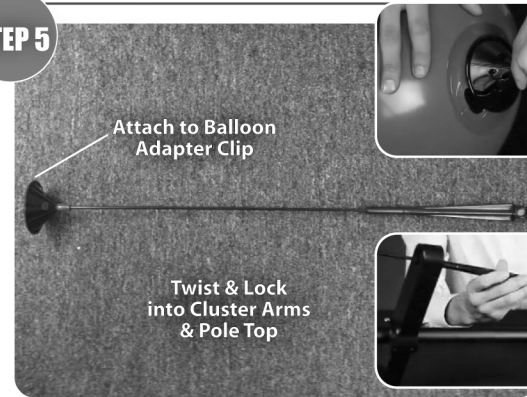


4. Take Clip & attach to bottom of Reusable Balloon. Stretch balloon handle to attach Clip securely.



Part#EZ 534

STEP 5



5-30" Reusable Balloon Holders

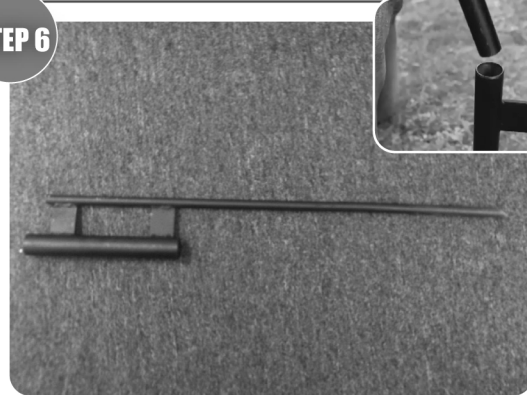


5. Attach 30" Balloon Holder to Adapter Clip on Reusable Balloon. Twist & lock into Balloon Cluster Arms & top of pole.



Part#EZ 548

STEP 6



1-Ground Spike



6. Conveniently use your foot or a hammer to implant the spike into the ground. Insert Aluminum Pole into Ground Spike holder.